

# Com Port Set Power

## AT-1453/AT-1455

## A. PP-1453

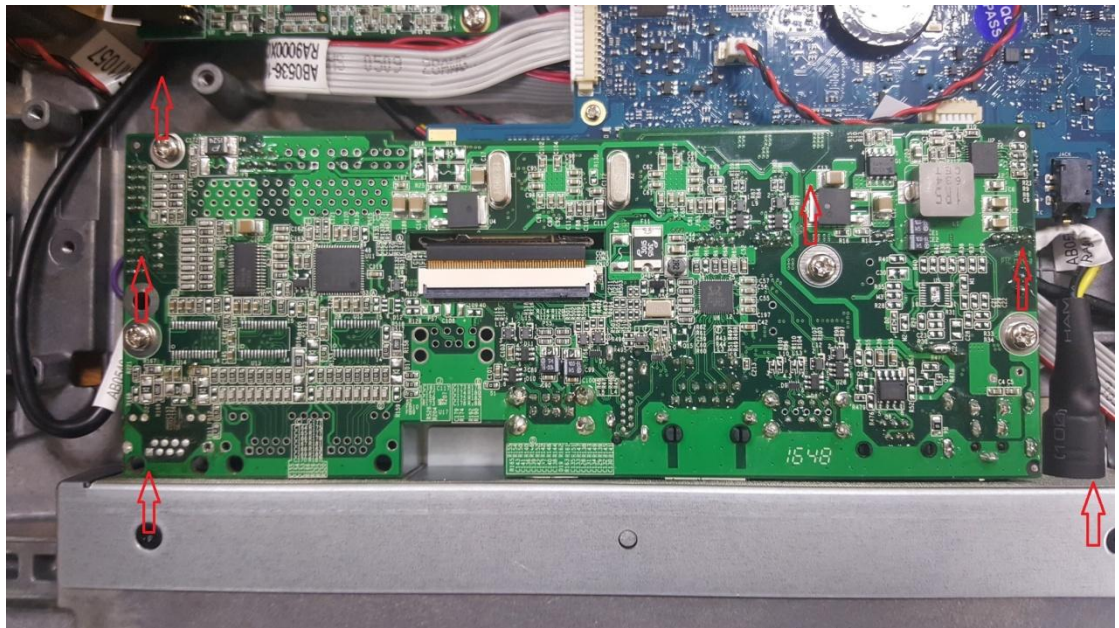
### 1. Remove the screws



### 2. Internal structure



3. Remove the screws



4. Com port corresponds



5. Com port Set 5V



6. Com port Set RI

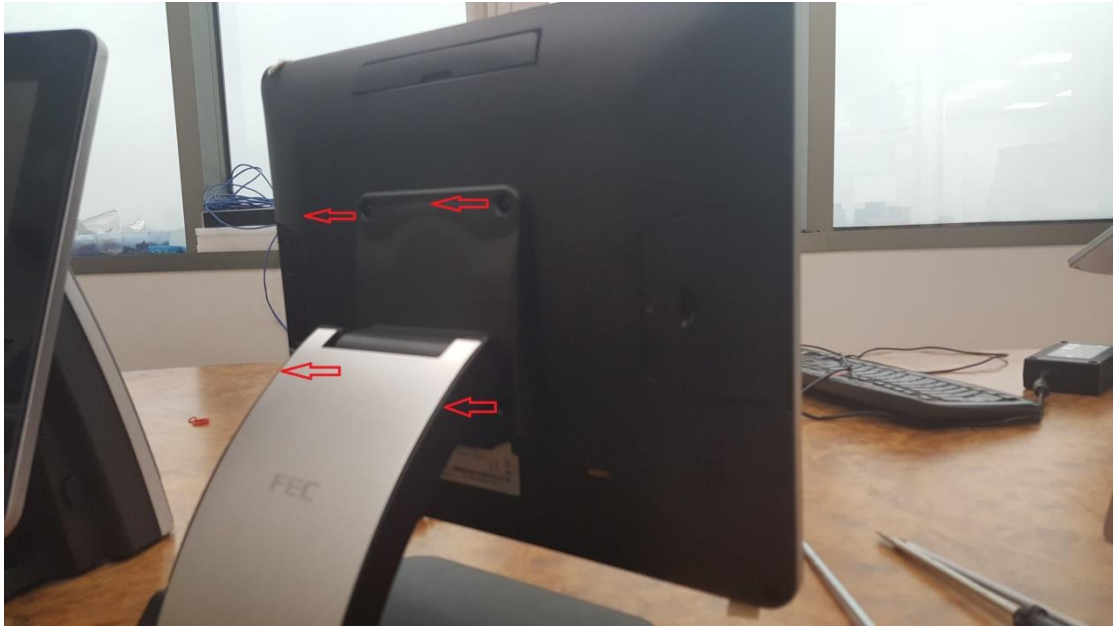


## 7. Com port Set 12V



B. PP-1455

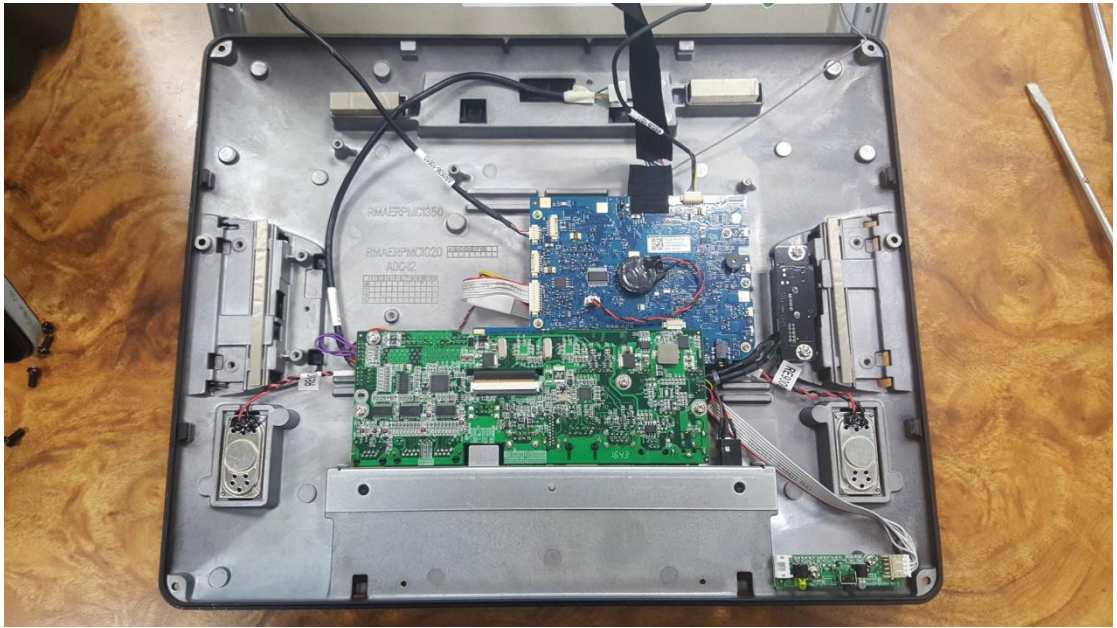
1. Remove the screws



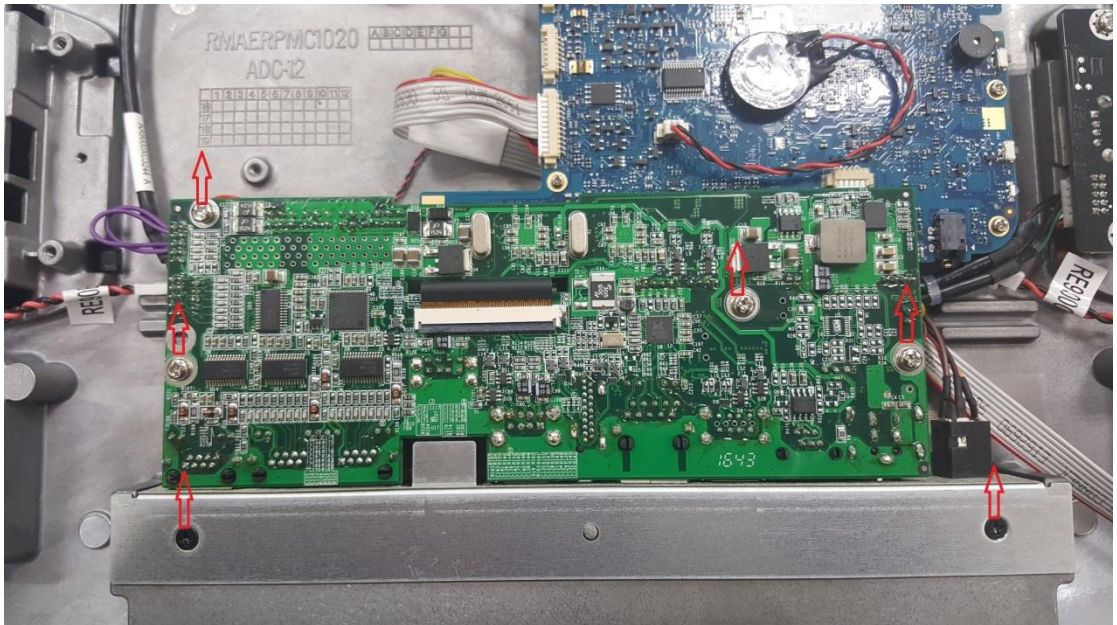
2. Remove the screws



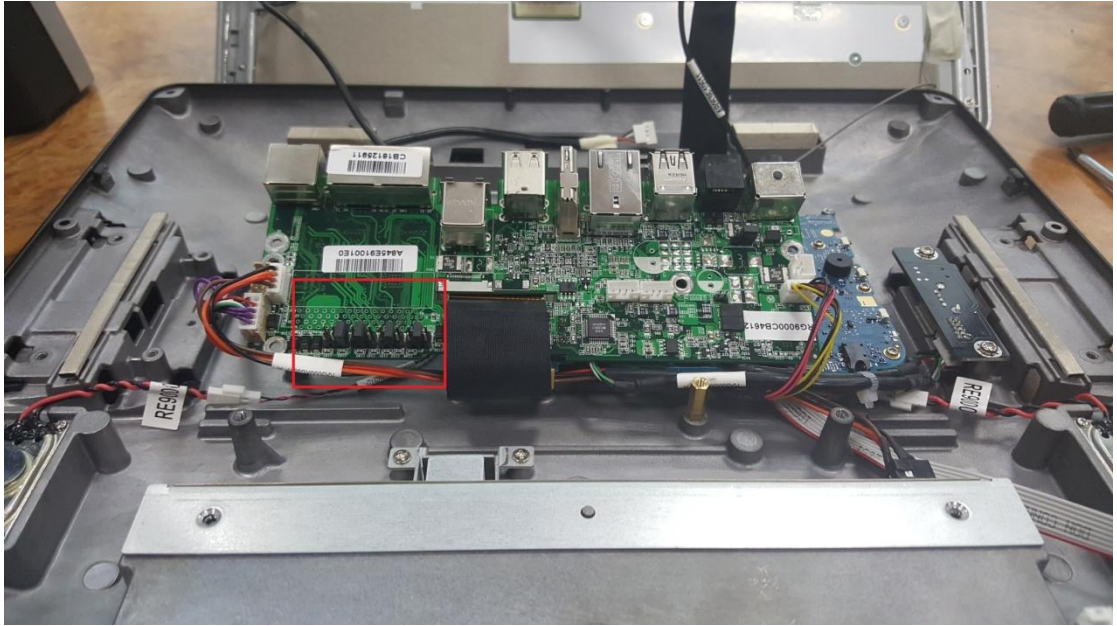
### 3. Internal structure



### 4. Remove the screws



5. IO board



6. Com port corresponds





7. Com port Set 5V



8. Com port Set RI



9. Com port Set 12V

